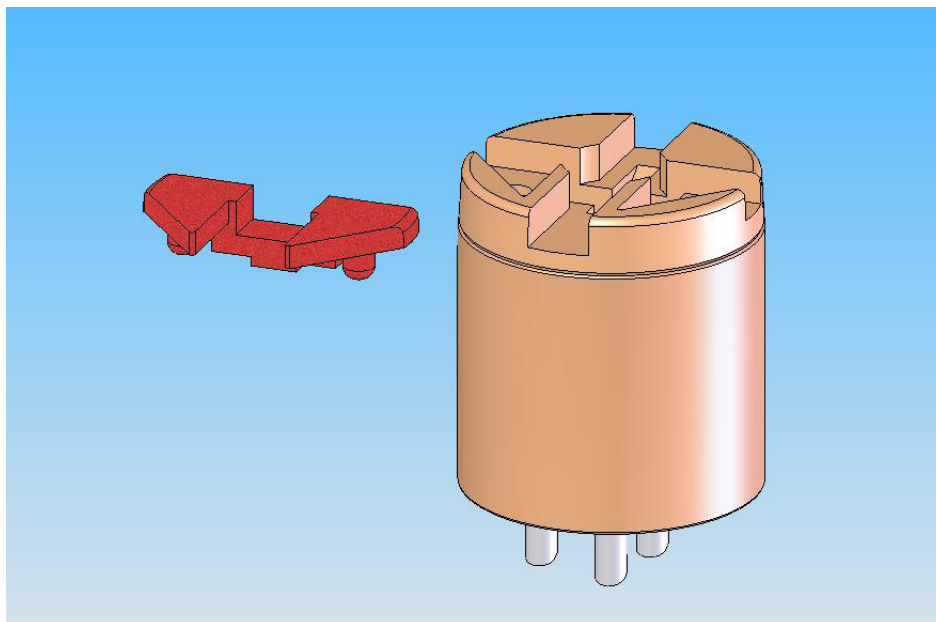


Application Note



Replaceable Color Marker for Trimmers PJ 62

The purpose of this Application Note is to achieve optimal handling and processing of the PJ 62 Replaceable Color marker.

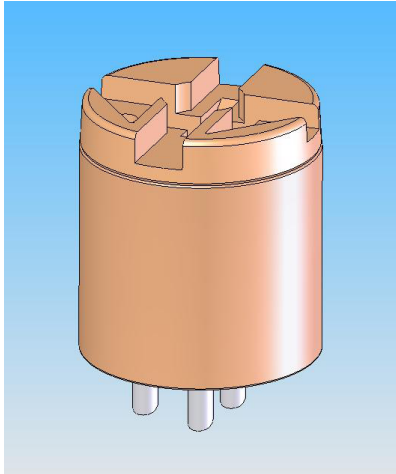
Contents

| | |
|---|---|
| 1. Color Marker | 2 |
| 2. Handling of the Components | 2 |
| 3. Removing the Color Marker | 3 |
| 4. Placing a Color Marker | 4 |
| 5. Rotating the Trimmer with Color Marker Mounted | 5 |
| 6. Replacing a Replaceable Color Marker..... | 5 |

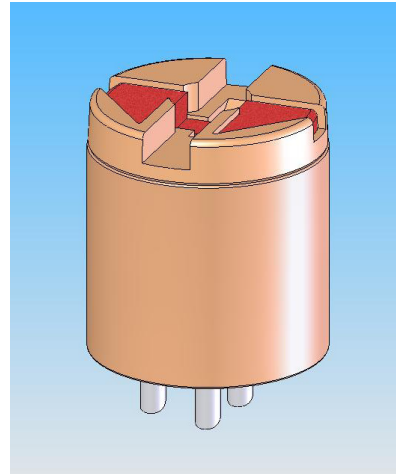
Application Note

1. Color Marker

A PJ 62 with the Replaceable Color Marker can be delivered with or without the Color Marker mounted.



Without Color Marker

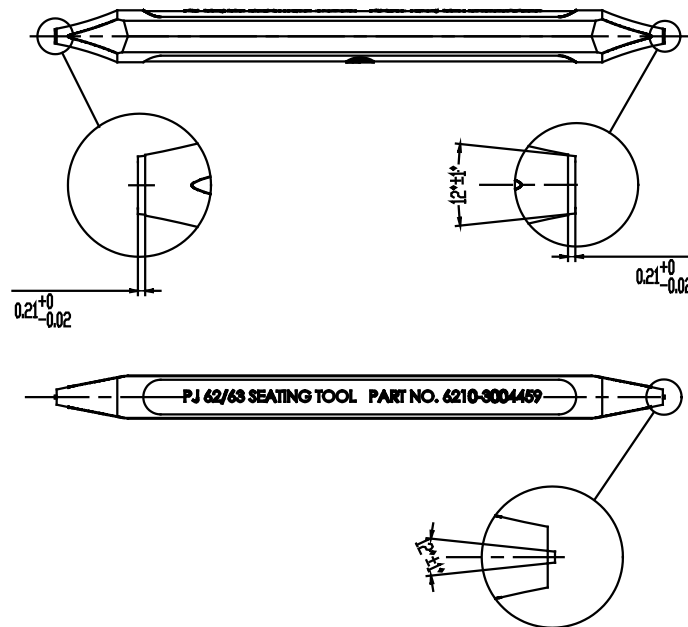


With Color Marker

The Color Markers are ordered separately in specific arrow colors.

2. Handling of the Components

We recommend that you use a microscope, tweezers, scalpel and seating tool (part no. 6210-3004459) when carrying out the operations described below.

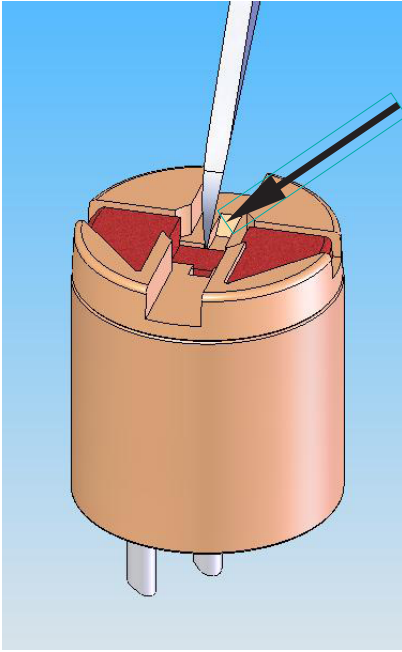


To ensure maximum retention force of the Color Marker, a minimum amount of stress should be used during handling and processing of the component.

Application Note

3. Removing the Color Marker

A scalpel should be used to remove the Color Marker.

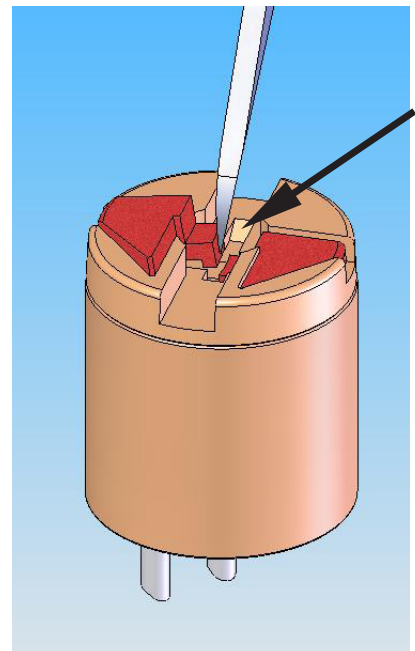


3a.

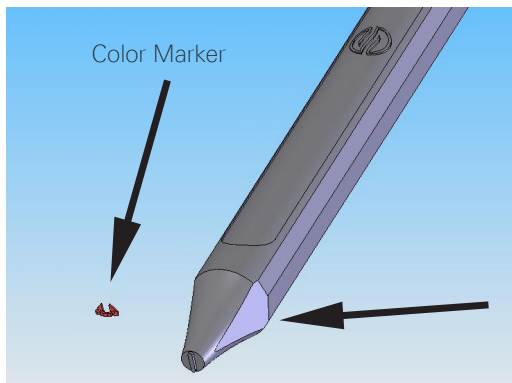
Carefully cut through the center bar of the Color Marker.

3b.

Position the tip of the tool into the side of the Color Marker, or into the removal pit. Carefully pull, or tip the tool in an axial/horizontal direction in the same movement until you can feel the marker release from the rotor. Avoid any excessive overloading of the rotor.

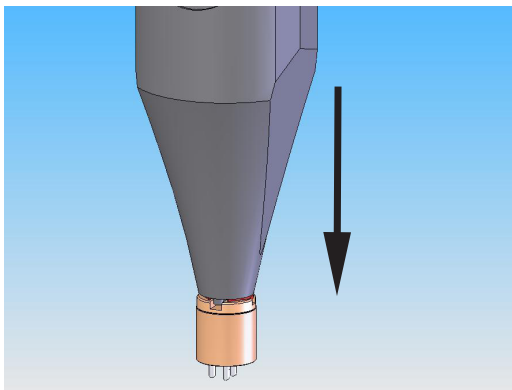
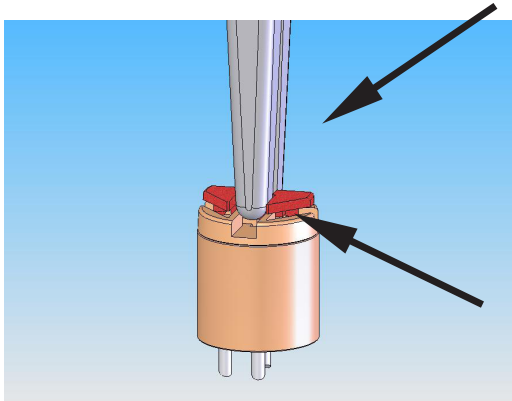


Application Note



Seating Tool

Tweezer



4. Placing a Color Marker

The color marker is positioned on the rotor by tweezers and attached by the Seating Tool.

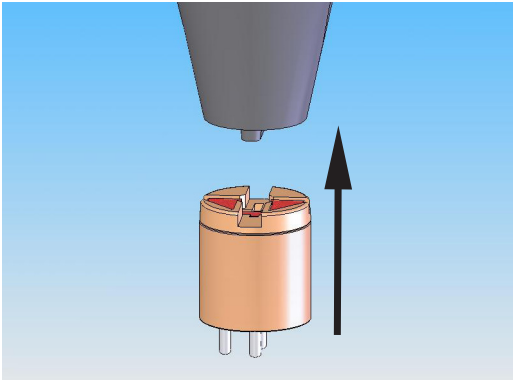
4a.

The Color Marker and rotor must be clean (i.e. no dirt, grease or glue), as this may influence the attachment. Place the Color Marker by means of a tweezers onto the top of the rotor, making sure the pins are aligned appropriately in the rotor alignment holes.

4b.

Position the Seating Tool on top of the Color Marker and then push slightly downward in an axial direction, until full engagement of the slot is felt with the seating tool.

Application Note



4d.

Remove the Seating Tool from the trimmer in an axial direction to avoid possible damage to the Color Marker.

5. Rotating the Trimmer with Color Marker Mounted

We recommend a 1.3 x 0.3 mm screwdriver to minimize stress/damage to the slot.

If a standard size screwdriver of 1.5 x 0.3 mm is used, it is important to be careful when inserting, pressing, and operating the screwdriver in the slot. Failure to do so will damage the slot and may cause unintended removal of the Color Marker.

6. Replacing a Replaceable Color Marker

To replace an already fixed Color Marker, the procedure in section 3. 'Removing the ColorMarker' can be repeated. Up to 10 removal cycles can be completed with only a minimal reduction of the retention force of the Color Marker.

Any questions in relation to this Application Note can be addressed to Customer Quality Service (CQS), Medical Division.
Mail to: sonion.cqs@sonion.com